

oty | bahnhofstrasse 117 | wetzikon
untergeschoss

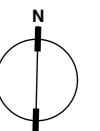
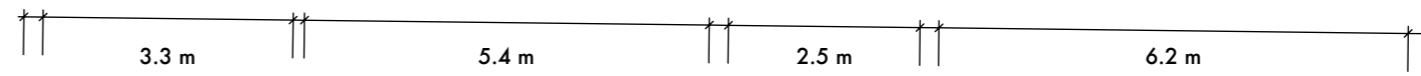
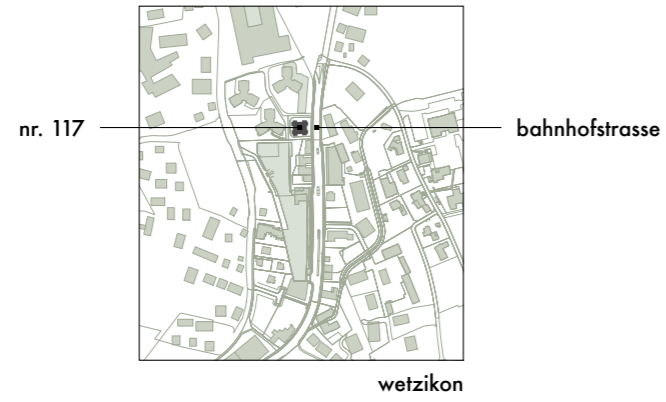
keller

trockenräume

technik | hauswart | lager

Kontakt: AZ Immobilienberatung AG
Postfach 1387
Bahnhofstrasse 126 | 8620 Wetzikon
Telefon 043 488 18 88
Telefax 043 488 18 89
info@az-immo.ch | www.az-immo.ch

AZ IMMOBILIEN
BERATUNG AG



bruttowohnfläche | inkl. innenwände | exkl. aussenwände



oty | bahnhofstrasse 117 | wetzikon
ladenlokal erdgeschoss

veloraum | 30.3 m²

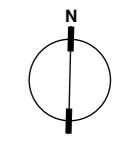
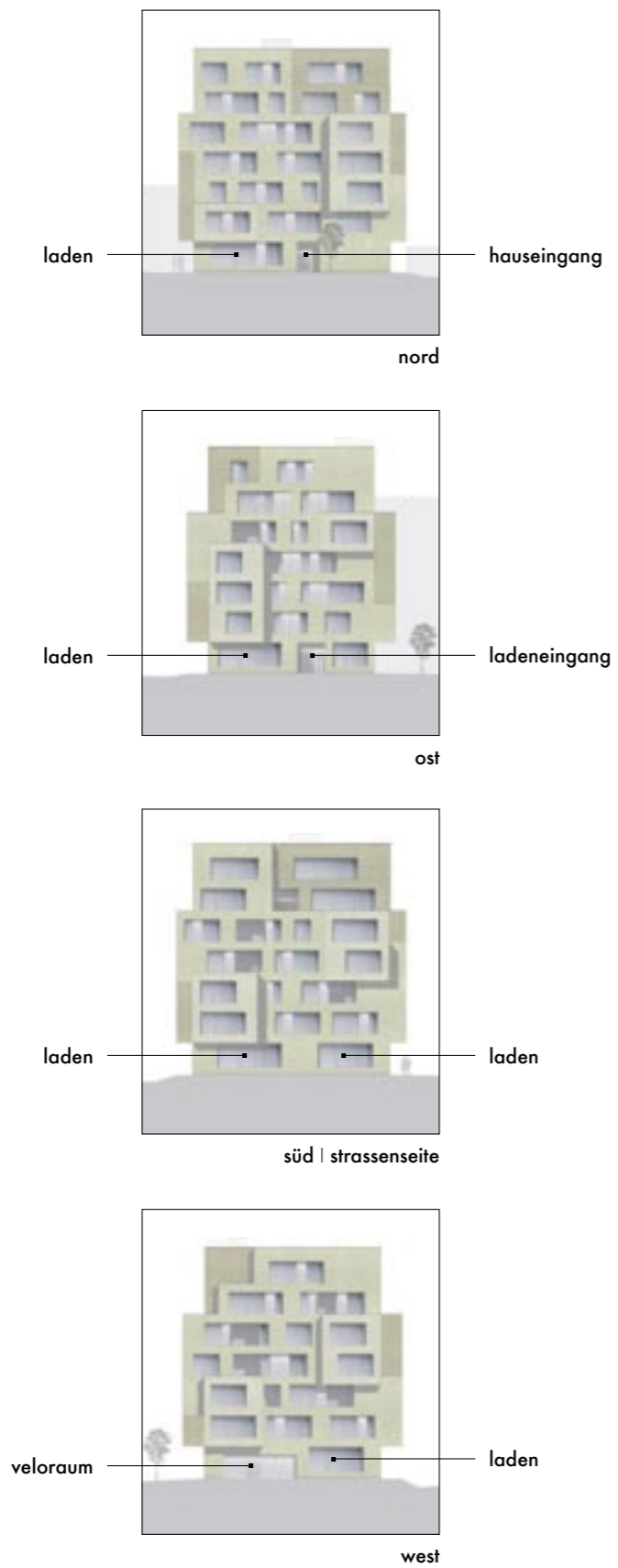
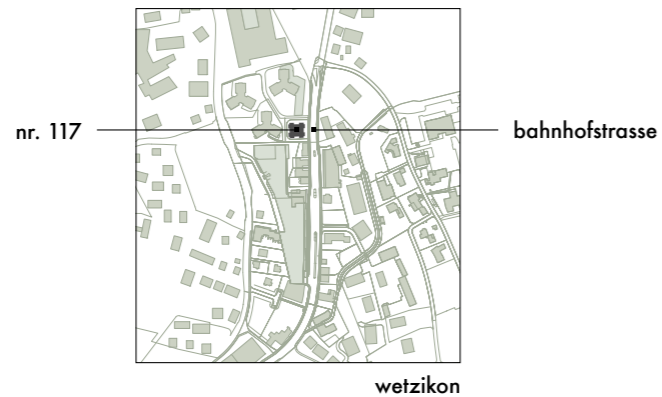
ladenlokal | 164.6 m²

Kontakt: AZ Immobilienberatung AG
Postfach 1387
Bahnhofstrasse 126 | 8620 Wetzikon
Telefon 043 488 18 88
Telefax 043 488 18 89
info@az-immo.ch | www.az-immo.ch

AZ IMMOBILIEN
BERATUNG AG



oty | ladenlokal erdgeschoss



bruttowohnfläche | inkl. innenwände | exkl. aussenwände



oty | bahnhofstrasse 117 | wetzikon
büro erstes obergeschoss

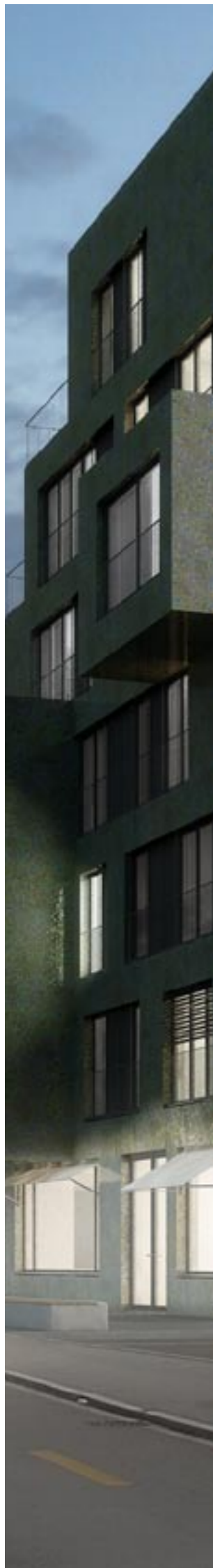
büro | b1 | 109.6 m²

büro | b2 | 93.5 m²

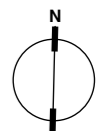
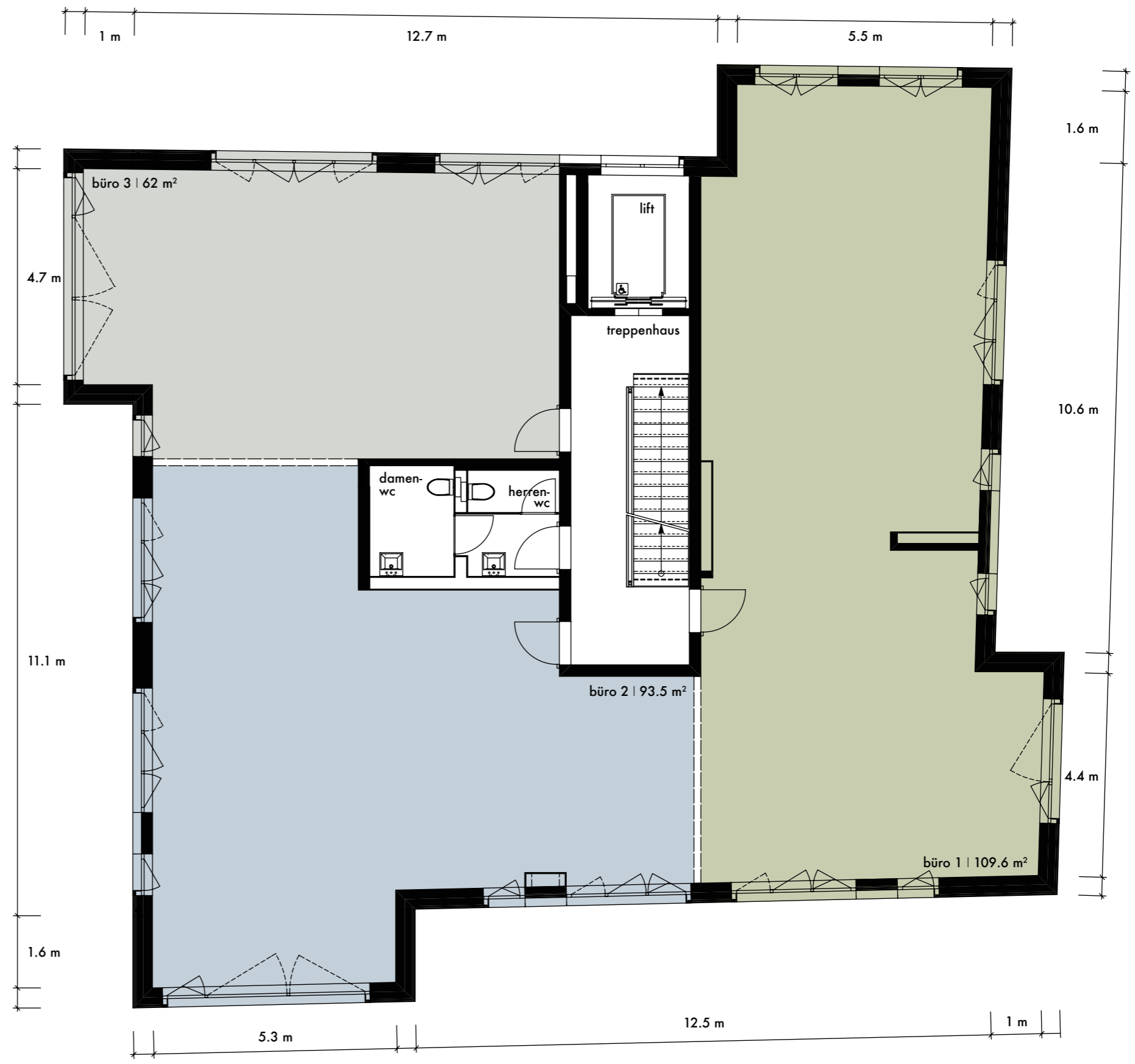
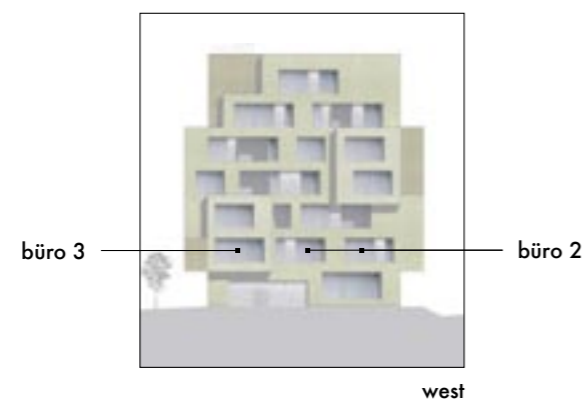
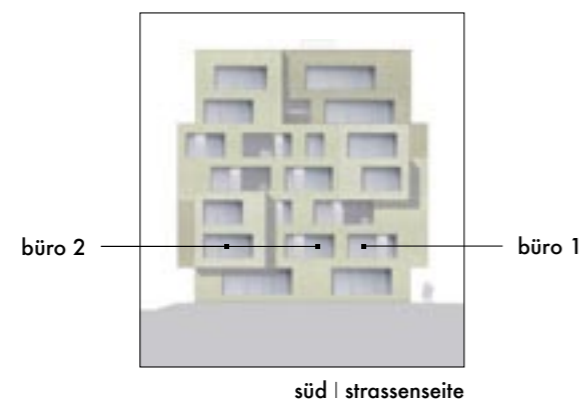
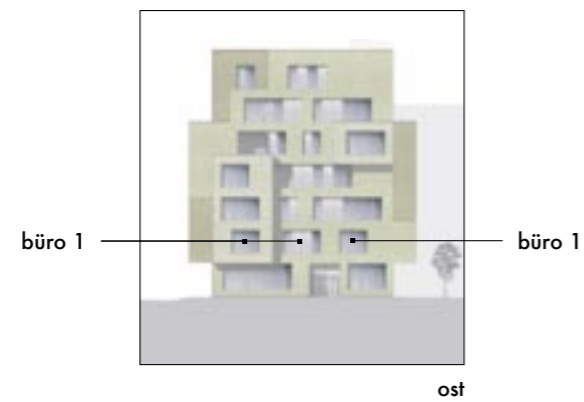
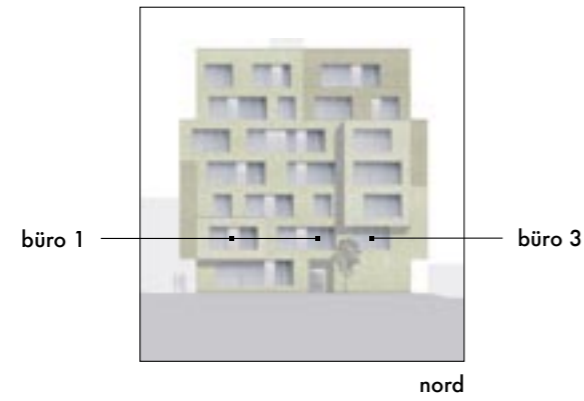
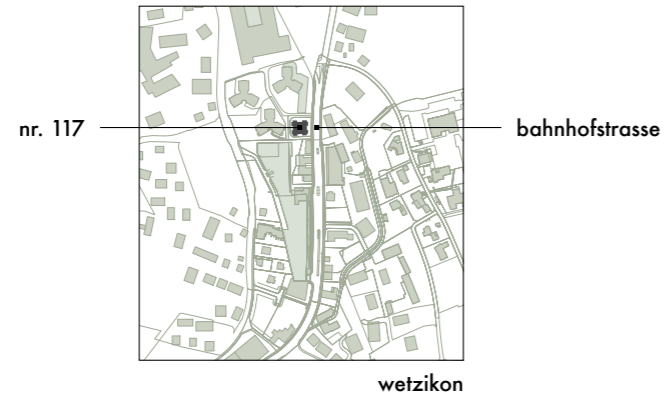
büro | b3 | 62 m²

Kontakt: AZ Immobilienberatung AG
Postfach 1387
Bahnhofstrasse 126 | 8620 Wetzikon
Telefon 043 488 18 88
Telefax 043 488 18 89
info@az-immo.ch | www.az-immo.ch

AZ IMMOBILIEN
BERATUNG AG



oty | büro erstes obergeschoss



bruttowohnfläche | inkl. innenwände | exkl. aussenwände



oty | bahnhofstrasse 117 | wetzikon
whg zweites obergeschoss

stier | whg1 | 3.5 zimmer | 96.4 m²

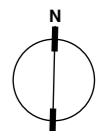
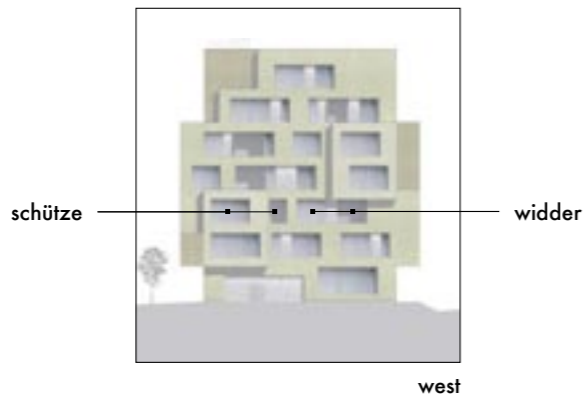
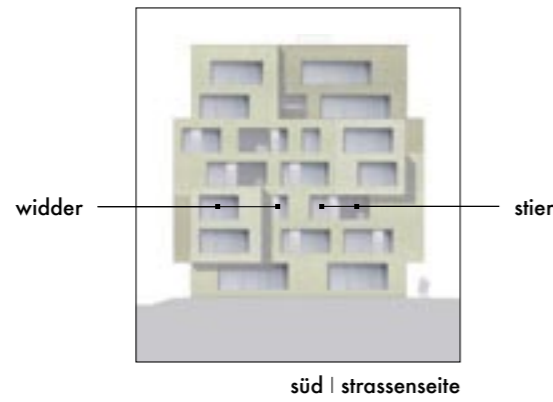
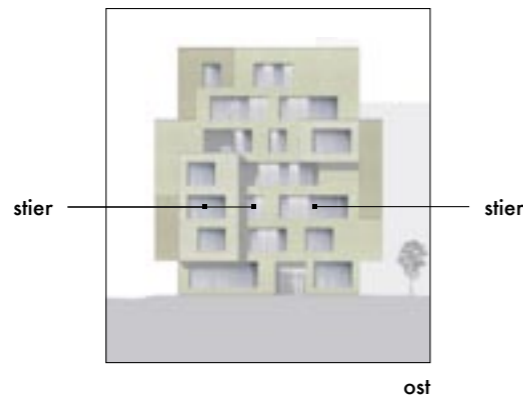
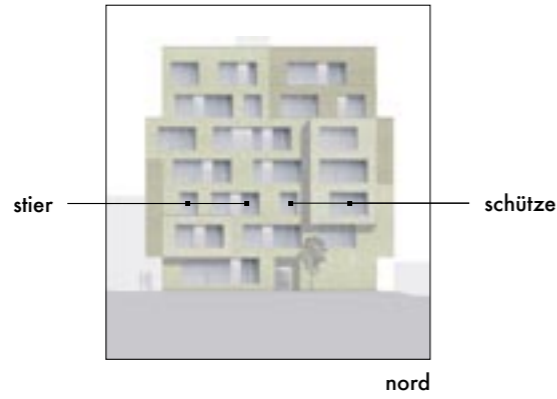
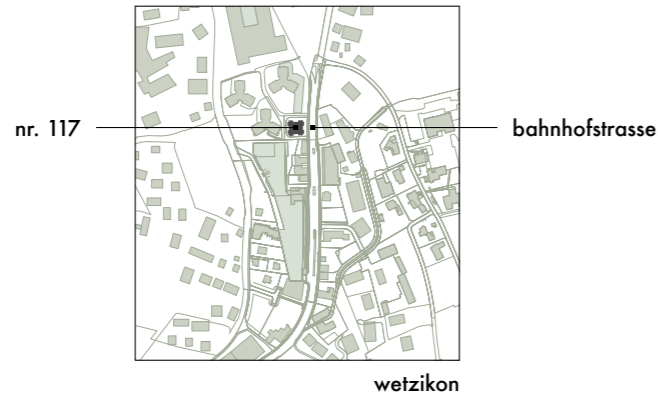
widder | whg2 | 3.5 zimmer | 97 m²

schütze | whg3 | 2.5 zimmer | 79.6 m²

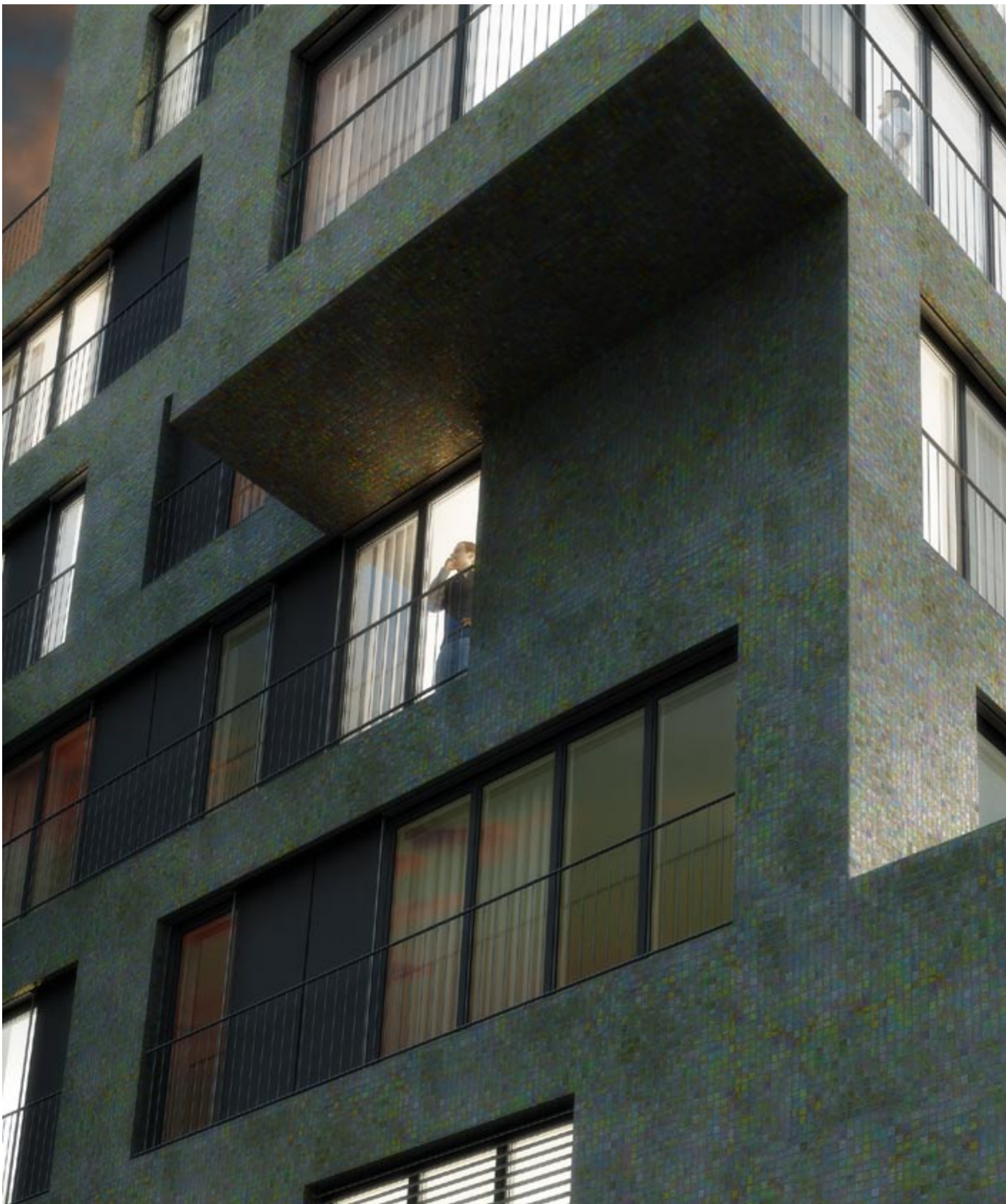
Kontakt: AZ Immobilienberatung AG
Postfach 1387
Bahnhofstrasse 126 | 8620 Wetzikon
Telefon 043 488 18 88
Telefax 043 488 18 89
info@az-immo.ch | www.az-immo.ch

AZ IMMOBILIEN
BERATUNG AG

oty | whg zweites obergeschoss



bruttowohnfläche | inkl. innenwände | exkl. aussenwände

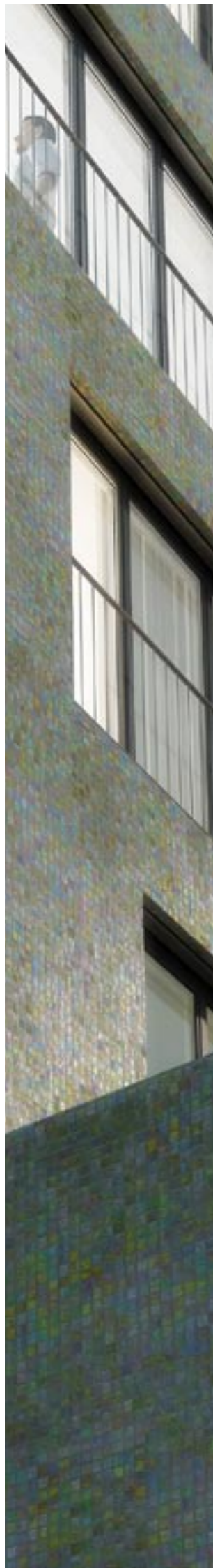


oty | bahnhofstrasse 117 | wetzikon
whg drittes obergeschoss

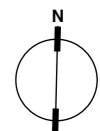
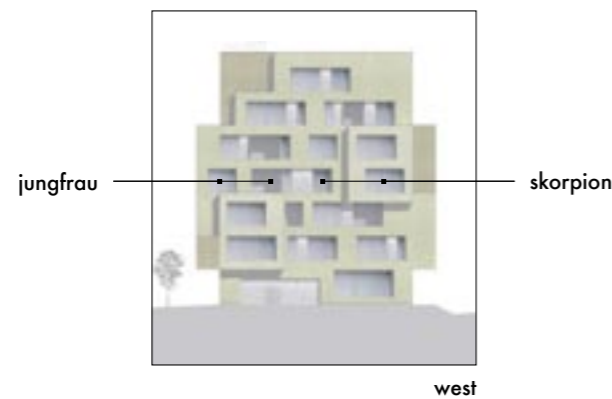
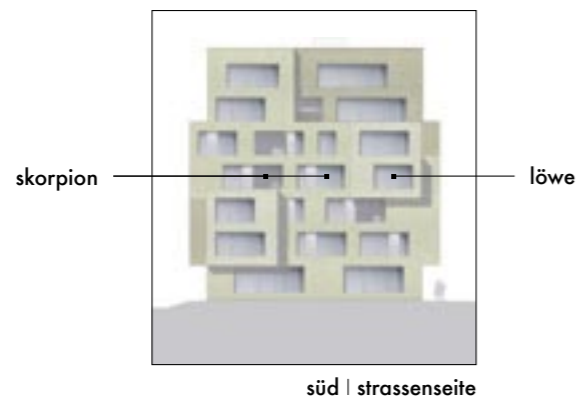
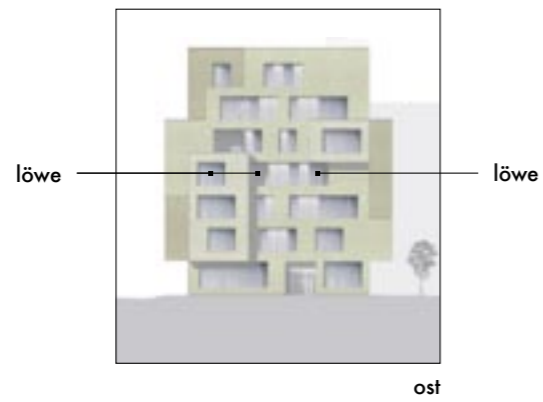
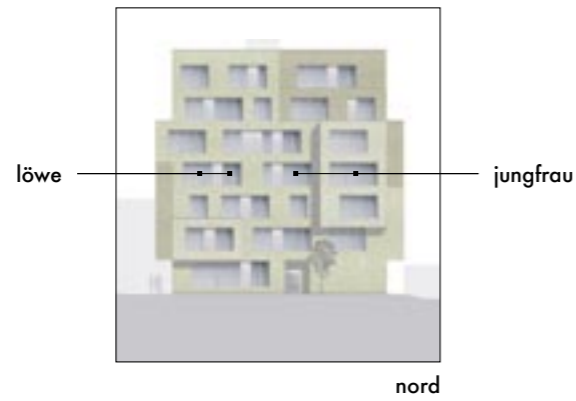
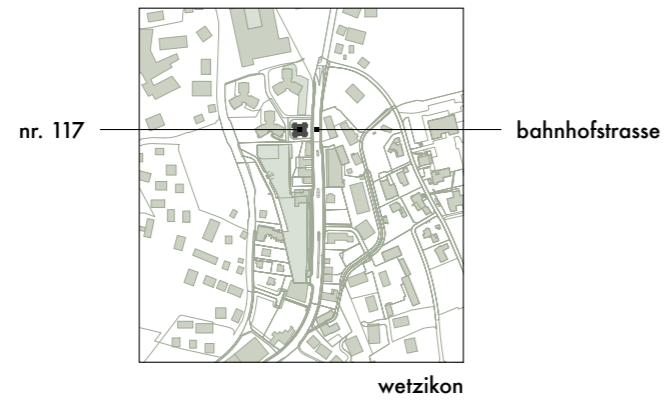
skorpion | whg4 | 3.5 zimmer | 107 m²
jungfrau | whg5 | 3.5 zimmer | 93.5 m²
löwe | whg6 | 2.5 zimmer | 72.6 m²

Kontakt: AZ Immobilienberatung AG
Postfach 1387
Bahnhofstrasse 126 | 8620 Wetzikon
Telefon 043 488 18 88
Telefax 043 488 18 89
info@az-immo.ch | www.az-immo.ch

AZ IMMOBILIEN
BERATUNG AG



oty | whg drittes obergeschoss



bruttowohnfläche | inkl. innenwände | exkl. aussenwände



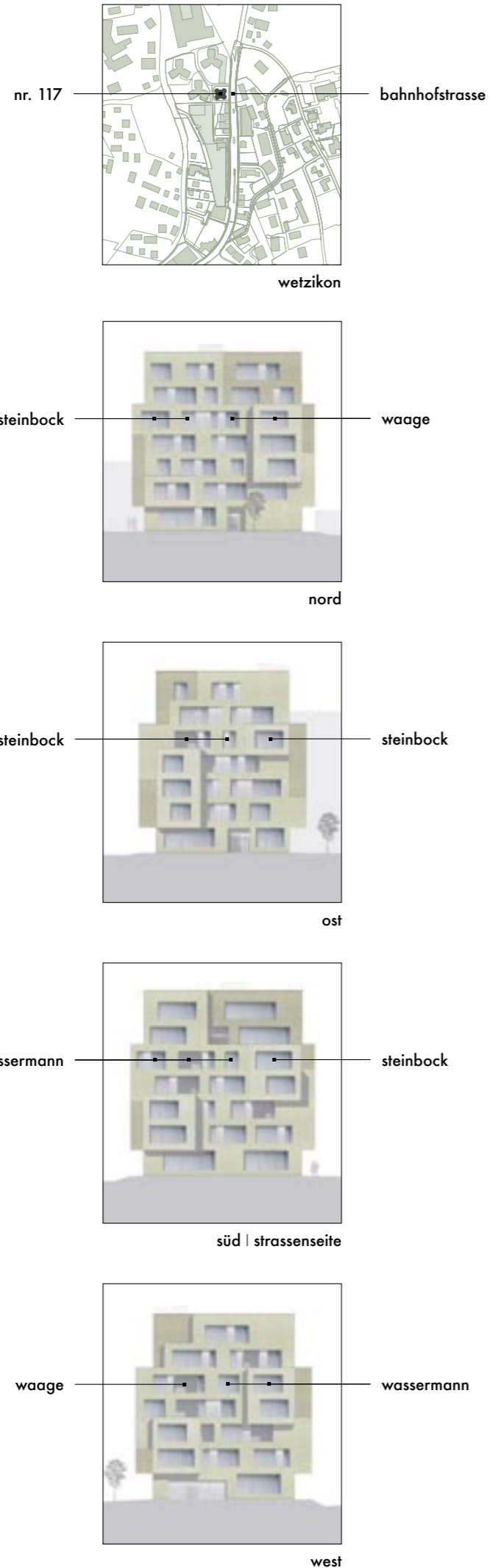
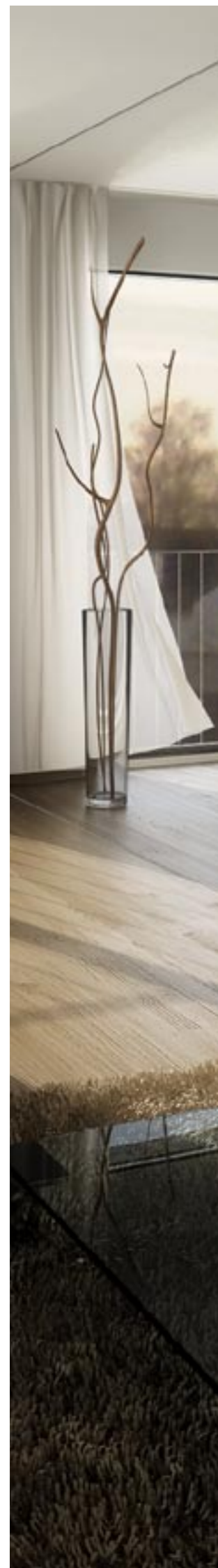
oty | bahnhofstrasse 117 | wetzikon
whg viertes obergeschoss

steinbock | whg7 | 3.5 zimmer | 107.1 m²
wassermann | whg8 | 3.5 zimmer | 93.5 m²
waage | whg9 | 2.5 zimmer | 72.5 m²

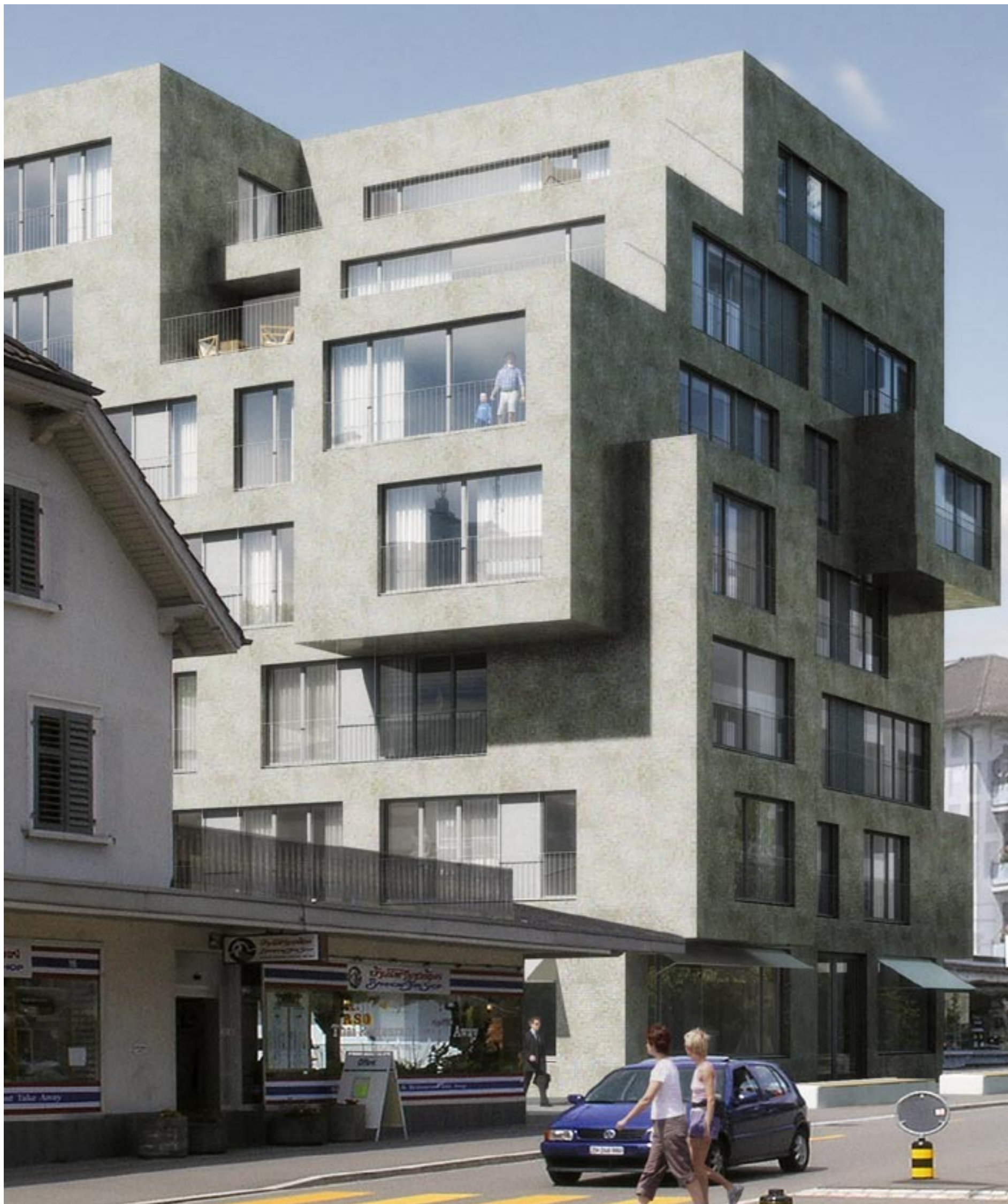
Kontakt: AZ Immobilienberatung AG
Postfach 1387
Bahnhofstrasse 126 | 8620 Wetzikon
Telefon 043 488 18 88
Telefax 043 488 18 89
info@az-immo.ch | www.az-immo.ch

AZ IMMOBILIEN
BERATUNG AG

oty | whg viertes obergeschoss



bruttowohnfläche | inkl. innenwände | exkl. aussenwände

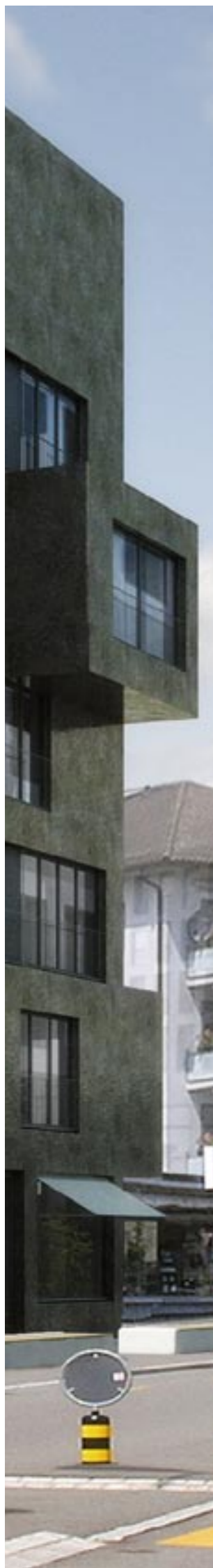


oty | bahnhofstrasse 117 | wetzikon
attika fünftes obergeschoss

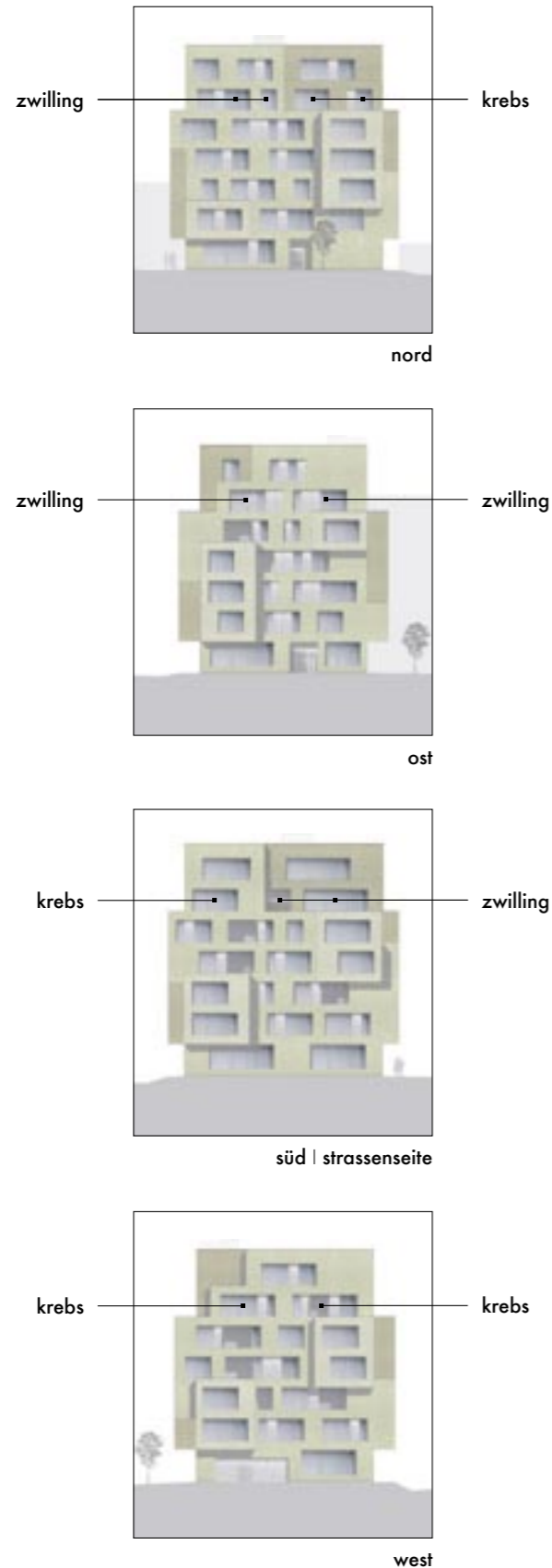
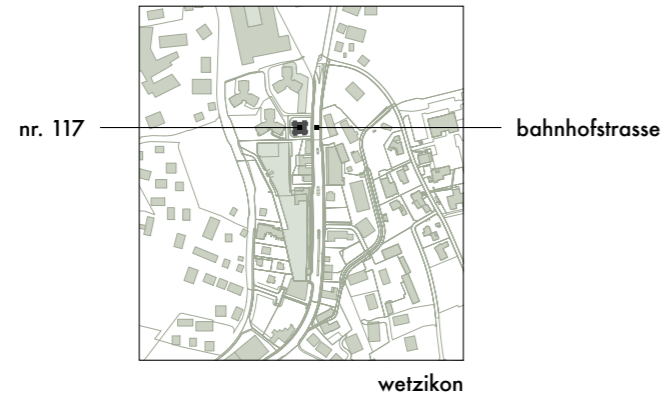
zwilling | whg10 | 3.5 zimmer | 97 m²
krebs | whg11 | 3.5 zimmer | 114.6 m²

Kontakt: AZ Immobilienberatung AG
Postfach 1387
Bahnhofstrasse 126 | 8620 Wetzikon
Telefon 043 488 18 88
Telefax 043 488 18 89
info@az-immo.ch | www.az-immo.ch

AZ IMMOBILIEN
BERATUNG AG

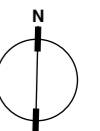
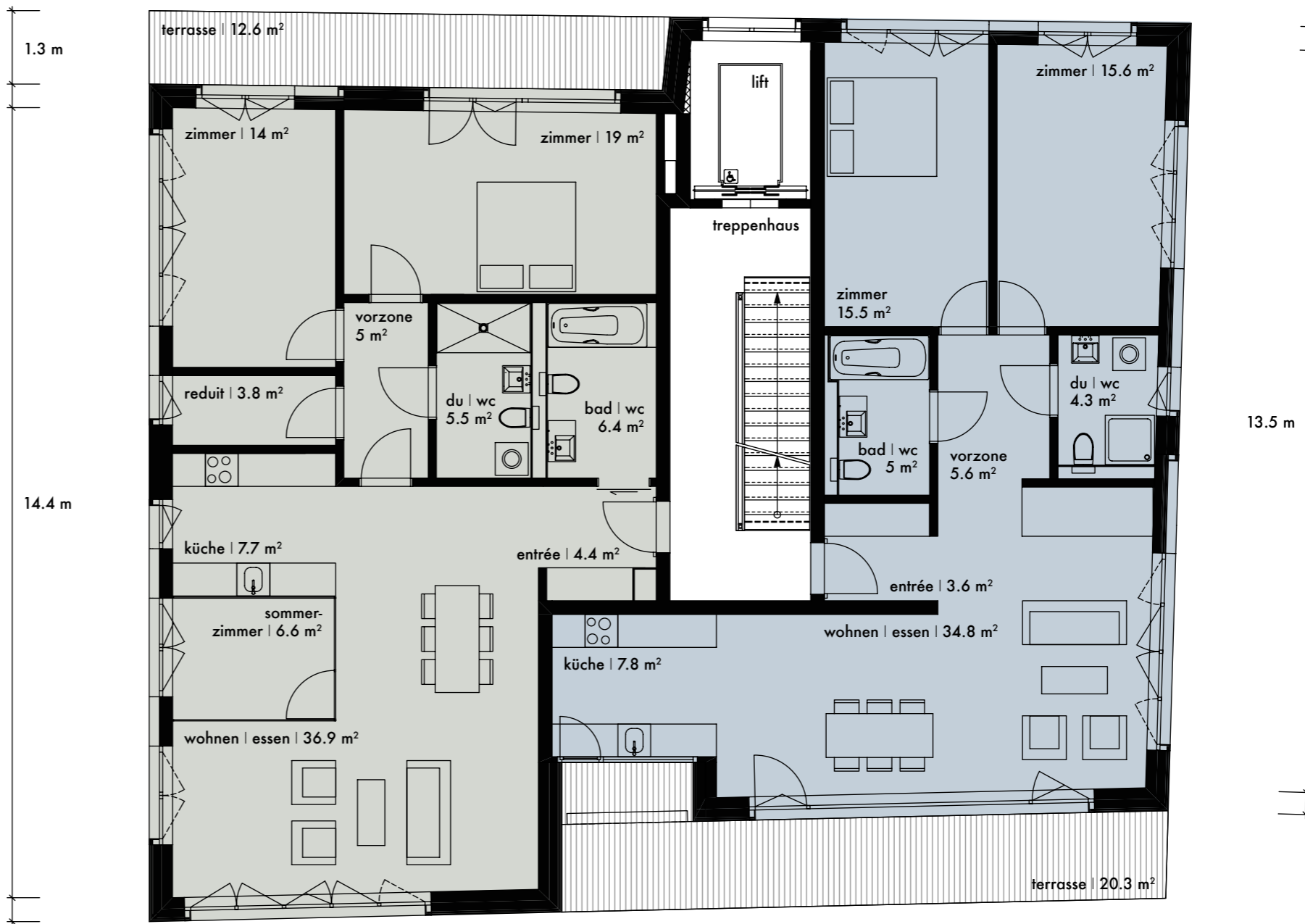


oty | attika fünftes obergeschoss



krebs | 114.6 m²

zwilling | 97 m²



bruttowohnfläche | inkl. innenwände | exkl. aussenwände



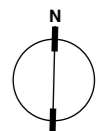
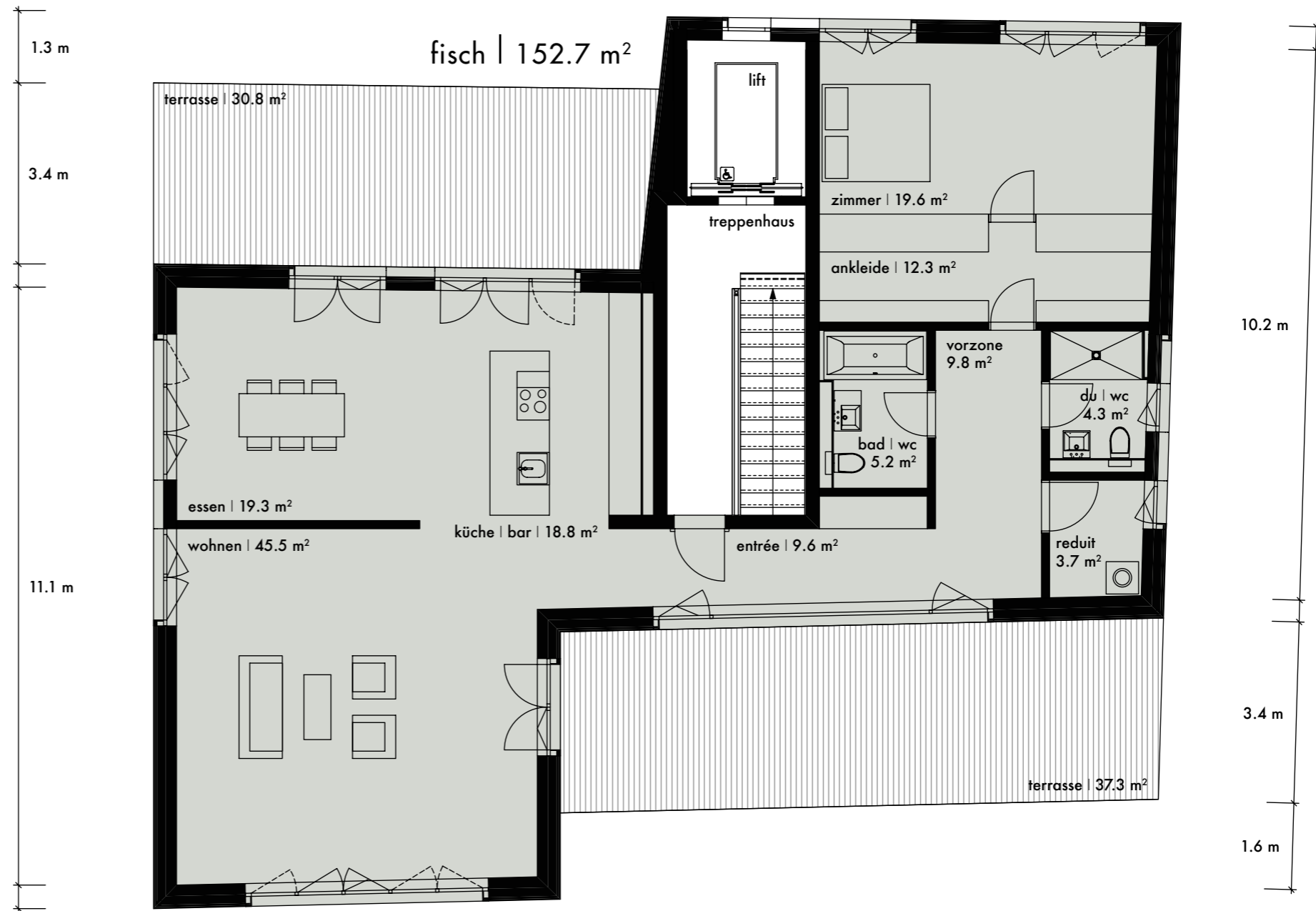
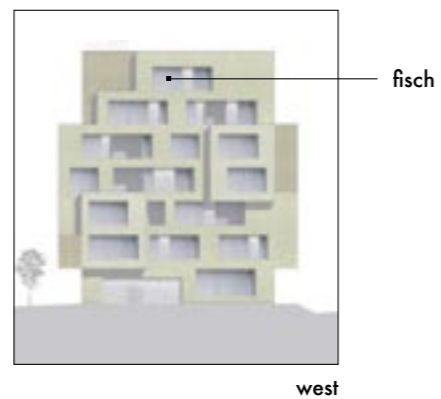
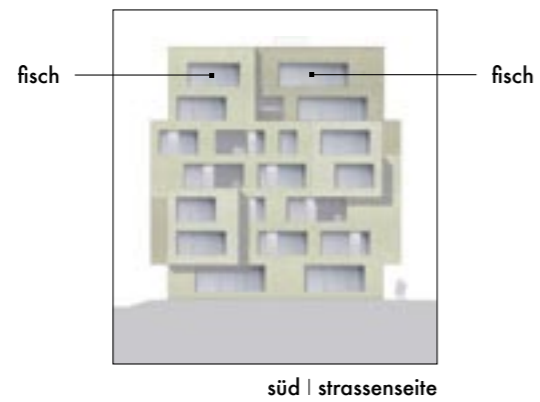
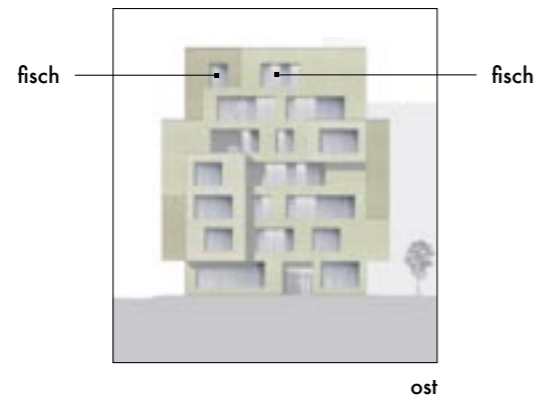
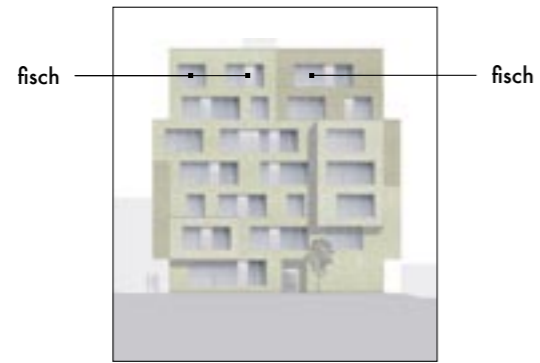
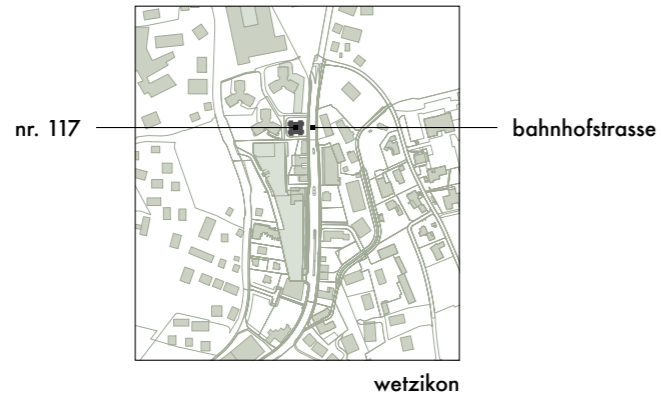
oty | bahnhofstrasse 117 | wetzikon
attika sechstes obergeschoss

fisch | whg12 | 4.5 zimmer | 152.7 m²

Kontakt: AZ Immobilienberatung AG
Postfach 1387
Bahnhofstrasse 126 | 8620 Wetzikon
Telefon 043 488 18 88
Telefax 043 488 18 89
info@az-immo.ch | www.az-immo.ch

AZ IMMOBILIEN
BERATUNG AG

oty | attika sechstes obergeschoss



bruttowohnfläche | inkl. innenwände | exkl. aussenwände

